

MONTIBELLO

# ēclat

join vitality

Natural acidic pH colour 1+2



**SHINE**  
Vitamin C



**BOND &  
REPLENISH**  
Proteins



UP TO  
**90% NATURAL**  
Origin ingredients



**VEGAN**

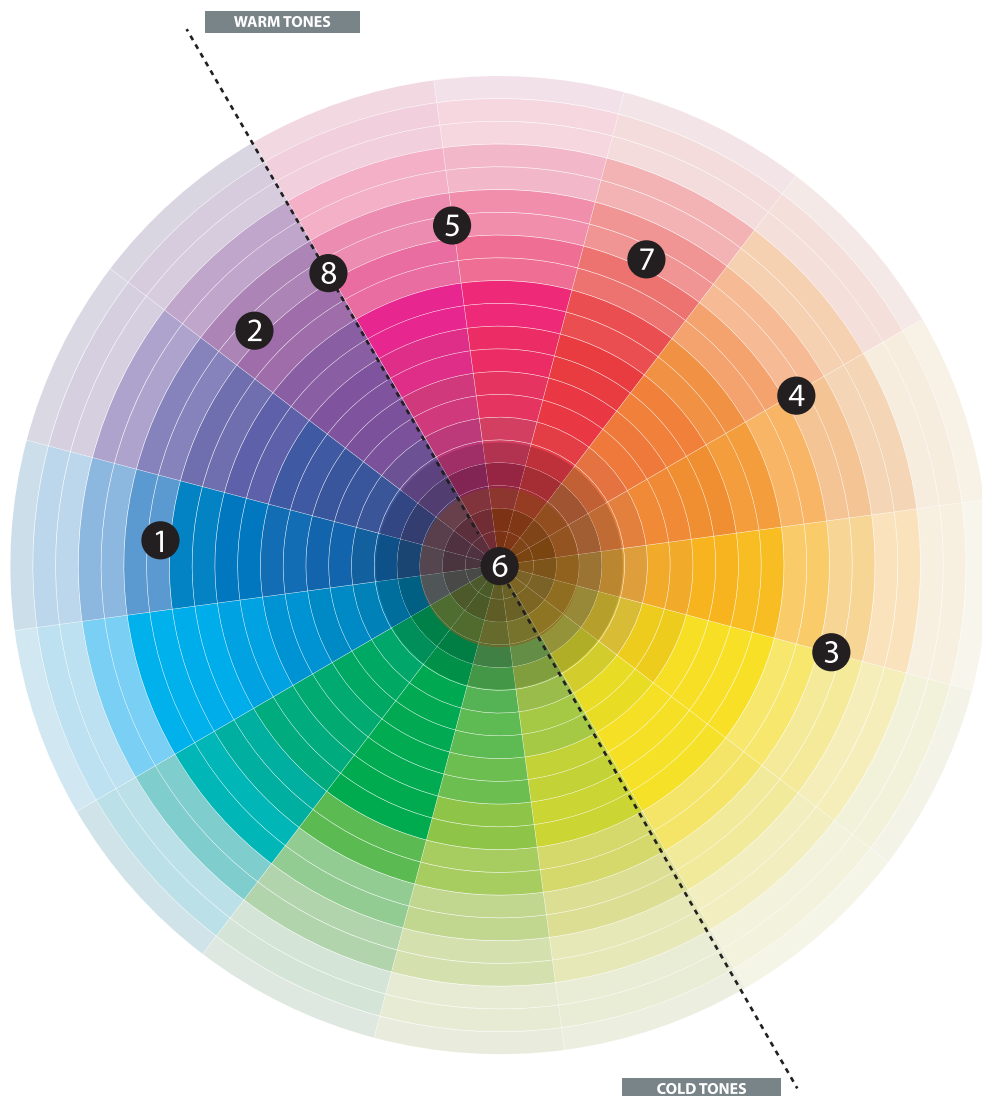
The only colour that achieves the quality,  
shine and shade of hair that is full of life.

INTENSITY LEVEL · NIVEL DE INTENSIDAD · POZOM LUB INTENSYWNOŚĆ · NIVEAU OU INTENSITÉ · SEVIYE VEYA YOĞUNLUK · ΕΠΙΠΕΔΟ Η ΕΝΤΑΣΗ · NÍVEL OU INTENSIDADE · 颜色等级或强度 · NIVEAU ELLER INTENSITET · NIVÁ OCH INTENSITET · درجة اللون

1. Black - Negro - Czarny - Noir - Siyah - Μαύρο - Preto - 黑色 - Sort - Svart - أسود
3. Dark Brown - Castaño Oscuro - Ciemny Brąz - Châtain Foncé - Koyu Kestane - Καστανό Σκούρο - Castanho-Escuro - 深褐色 - Mørkebrun - Mörkbrun - كستنائي داكن
4. Medium Brown - Castaño - Brąz - Châtain - Kestane - Καστανό - Castanho - 褐色 - Mellebrun - Brun - كستنائي فاتح
5. Light Brown - Castaño Claro - Jasny Brąz - Châtain Clair - Açık Kestane - Καστανό Ανοιχτό - Castanho-Claro - 浅褐色 - Lysebrun - Ljusbrun - كستنائي فاتح
6. Dark Blonde - Rubio Oscuro - Ciemny Blond - Blond Foncé - Koyu Sarı - Ξανθό Σκούρο - Louro Escuro - 深金色 - Mørkeblond - Mörkblond - أشقر داكن
7. Medium Blonde - Rubio - Blond - Blond - Sarı - Ξανθό - Louro - 金色 - Melleblond - Blond - أشقر
8. Light Blonde - Rubio Claro - Jasny Blond - Blond Clair - Açık Sarı - Ξανθό Ανοιχτό - Louro Claro - 浅金色 - Lyseblond - Ljusblond - أشقر فاتح
9. Very Light Blonde - Rubio Extraclaro - Bardzo Jasny Blond - Blond Extra-Clair - Ekstra Açık Sarı - Ξανθό Πολύ Ανοιχτό - Louro Extra Claro - 亮金色 - Ekstra Lyseblond - Extra Ljusblond - أشقر فاتح جدا
10. Lightest Blonde - Rubio Platino - Platynowy Blond - Blond Platine - Platin Sarısı - Ξανθό Πλατινέ - Louro Platinado - 亚麻金 - Platinblond - Platinablond - أشقر بلاتيني

TONE · MATIZ · ODCIEŃ · REFLET · NÜANS · ΑΠΟΧΡΩΣΗ · REFLEXO · NUANCE · NYANS · صبغة

0. Natural - Natural - Naturalny - Naturel - Doğal - Φυσιικό - Natural - 天然 - Natur - Natur - طبيعي
1. Ash - Ceniza - Popielaty - Cendré - Küllü - Σαμπρέ - Acinzentado - 灰色 - Ask - Ask - رمادي
2. Pearl - Irisado - Perłowy - Irisé - Işıltılı - Ipiçé - Irisado - 珍珠色 - Iriserende - Iriserand - متقزح
3. Gold - Dorado - Złoty - Doré - Altın Sarısı - Ntörpe - Dourado - 金黄 - Gylden - Guld - ذهبي
4. Copper - Cobre - Miedziany - Cuivré - Bakır - Χάλκινο - Acobreado - 铜色 - Kobber - Koppar - نحاسي
5. Mahogany - Caoba - Mahoniowy - Acajou - Kumral - Μαόνι - Acaju - 桃红色 - Mahogni - Mahogny - ماهوجني
6. Brunette - Marrón - Kasztanowy - Marron - Kahverengi - Μαρον - Marrom - 棕色 - Brun - Kastanj - بني
7. Red - Róża - Czerwony - Rouge - Kırmızı - Kókkivo - Averbhelhado - 红色 - Rød - Röd - احمر
8. Purple - Púrpura - Purpurowy - Pourpre - Mor - Πορφυρό - Púrpura - 紫红色 - Lilla - Lila - أرجواني



LABEL INTERPRETATION · INTERPRETACIÓN DE LA ETIQUETA · INTERPRETACJA ETYKIETY · INTERPRÉTIATION DE L'ÉTIQUETTE · ETİKETİN YORUMLANMASI · ΕΡΜΗΝΕΙΑ ΤΗΣ ΕΤΙΚΕΤΑΣ · INTERPRETAÇÃO DA ETIQUETA · 标签解读 · SÄDAN LÄSES ETIKETTEN · TOLKA ETIKETTEN · تاويل الالفة

INTENSITY LEVEL  
NIVEL DE INTENSIDAD  
POZOM LUB INTENSYWNOŚĆ  
NIVEAU OU INTENSITÉ  
SEVIYE VEYA YOĞUNLUK  
Επίπεδο ή ένταση  
NÍVEL OU INTENSIDADE  
颜色等级或强度  
NIVEAU ELLER INTENSITET  
NIVÁ OCH INTENSITET  
المستوى أو القوة

9-23

TONE  
MATIZ  
ODCIEŃ  
TEINTE  
NÜANS  
βαφή  
MATIZ  
色调  
FARVEAFSTEMNING  
TON  
الانعكاس



CLEAR

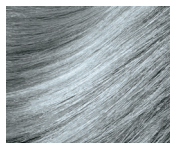


ASH & PEARL \_ CENIZAS E IRISADOS

10-13



10-12



10-2



9-21



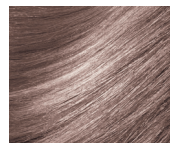
9-23



8-12



8-2



8-13



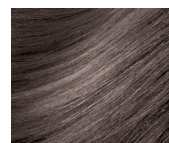
7-21



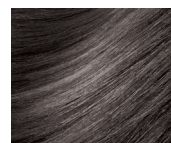
7-23



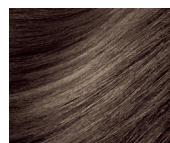
6-1



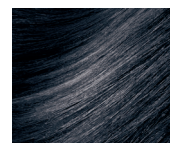
5-11



5-23



1-1



## GOLD \_ DORADOS

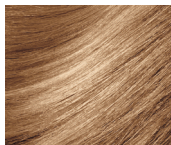
10-3



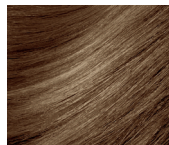
9-31



8-3



7-31



6-3

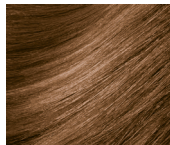


## BRUNETTE \_ MARRÓN

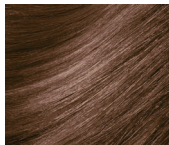
9-60



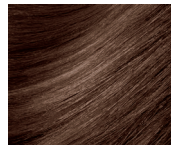
7-60



7-62



6-66



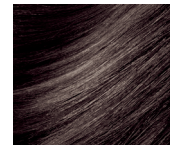
5-60



4-61



3-60

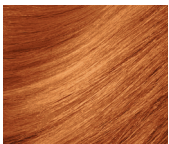


## RED, COPPER, MAHOGANY & PURPLE \_ ROJOS, COBRES, CAOBAS Y PÚRPURAS

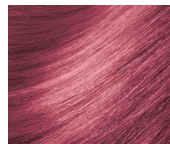
10-4



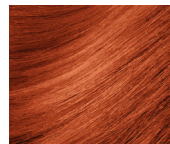
8-4



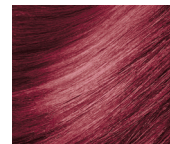
8-58



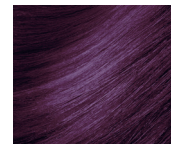
7-44



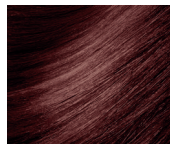
7-78



6-88



5-5



5-77

